



# PortaFUEL

## Fuel Tank Installation & Maintenance Guide

**DIESEL BOX & DIESEL TOOLBOX**

**POLLICUBE**

**POLLITROLLI**

**PORTATANK**

[www.atlantistanks.co.uk](http://www.atlantistanks.co.uk)



Atlantis

# Contents

## **DIESEL BOX & DIESEL TOOLBOX 3**

General Description	3	Operational Problems	10
Safety Precautions	4	Warranty	11
EC Declaration of Conformity	5	Warnings & Equipment	12
Tank Filling & Refueling	6	Monthly Maintenance Checks	13
Preliminary Operations	7	Pump Certification	14
Installation & Positioning	8	Declaration of Conformity Certificate	15
Obligations & Maintenance	9		

## **POLLICUBE 16**

General Description	16	Maintenance	20
Safety Precautions	17	Operational Problems	21
EC Declaration of Conformity	18	Warranty	22
Preliminary Operations	19	Warnings	23
Electrical Installation	20		

## **POLLITROLI 24**

General Description	24	Electrical Installation	28
Safety Precautions	25	Maintenance	28
Specifications & Equipment	26	Transport	29
Compliance	27	Operational Problems	30
Preliminary Operations	27	Warranty	31

## **PORTATANK 32**

General Description	32	Tests	39
Technical Data & Features	33	Stationary Tank Usage	40
Specifications	34	Guarantee	40
Operation	35	General View & Exploded View	41
Transport Equipment	36	Exploded View	42
Transport & Storage	37	Control & Operating Reports	43
Transport Documentation	38	Damage & Repair Reports	44
Safety Regulations	38	ADR Certificates	45

## **TERMS & CONDITIONS 48**




# DIESEL BOX & DIESEL TOOLBOX

Please read this manual before use, maintenance & repair of these tanks.



## General Description

- The DieselBox is a transportable tank in accordance with ADR exemptions.
- Total Exemption: in accordance with par. 1.1.3.1
- DieselBox is adequate for purpose.
- The DieselBox is constructed from 3mm carbon steel.
- Only suitable for the transport of Diesel. UN1202

# Safety Precautions

---

## **Improper use of installation of this product can cause serious bodily injury or death!**

- Not for use with Gasoline, Alcohol or other liquid with a flash point below 40°C (104°F)
- Not for use in hazardous locations
- Not for use with fluids thicker than Diesel fuel
- Not for use with fluids for human consumption or fluids containing water
- Not for continuous duty applications
- It is forbidden to pick up and walk on the structure of this tank
- It is forbidden to bring parts of the body between moving parts
- It is forbidden to alter or to tamper in some way the mobile elements (quick clutches and deliver manual or electric pumps). It is forbidden to start to operate the tank without having verified that all the safety devices are functioning and connected.
- No smoking nearby this tank
- Do not exceed its limit of capacity
- Only lift tank using lifting eyes when the tank is empty
- The operator must ensure that they have not accumulated electrostatic charges before any transaction involving the tank
- Any operation near the tank that requires tools must only be the use of tools that generate (maximum) single sparks during use. Sawing and other operations creating multiple sparks must not take place near this tank

 **Atlantis**

 **PortaFUEL** DIESEL BOX & TOOLBOX

# EC Declaration of Conformity

---

**DieselBox is a Transportable tank in accordance with ADR exemptions.**

**Total exemption: In accordance with Par. 1.1.3.1, Diesel Box is adequate for purpose.**

**The supplier:**

Atlantis Tanks Group Ltd  
Legend House  
Ferryhill  
Durham  
DL17 0BP

DIESEL BOX & DIESEL TOOLBOX: EC DECLARATION OF CONFORMITY



# Preliminary Operations

---

1. Open the tank cover, make sure that during transport the tank has not been damaged
2. Position the tank on a secure surface, in a ventilated area, making sure that it is securely fastened during transportation. ATTENTION, once full with liquid, the sloshing force could provoke tank movements
3. Unscrew the filter plug and fill up tank with diesel after having verified that the pump is unplugged. For this operation wear appropriate safety clothes and devices like glasses & gloves
4. Once the tank is full, close and secure the filler plug
5. If you have received a flow meter, this will need calibrating

The Atlantis logo features a stylized orange triangle to the left of the word "Atlantis" in a bold, sans-serif font.The logo for PortaFUEL Diesel Box & Toolbox. It includes a stylized blue triangle icon to the left of the word "PortaFUEL" in a bold, sans-serif font, followed by "DIESEL BOX & TOOLBOX" in a smaller, all-caps, sans-serif font.

# Installation & Positioning

**Handling, positioning and operation should be performed by qualified personnel.**

The ADR requires that the container is anchored (with straps or packed) to the vehicle. Fixing it to the wall or the bottom (through bolting and / or welding) of the vehicle involves the necessary approval by the competent authority (civil motorisation) through testing (such as towing hook). Failure of testing could cause penalisation by supervisory bodies (police).

## Electrical Installation (12v or 24v)

1. Connect the battery clips to a suitable battery, capable of delivering the necessary voltage and current (see pump spec)
2. The Red clip is attached to the positive (+) battery terminal
3. The Black clip is attached to the negative (-) battery terminal or to the vehicle frame
4. If the power cable provided is not long enough, it must be replaced by an authorized electrician.

**Avoid sparks that could cause a fire.**

**Do NOT use a patch cord to extend the power cables.**

 Atlantis

 PortaFUEL DIESEL BOX & TOOLBOX

# Installation & Positioning

## Electrical Installation – 230v

- The pump must be provided with a safety device of 30mA minimum Din standard.
- The plug must be connected to an earthed SHUKO socket. Do not cut or replace the provided plug.

**Avoid sparks that could cause a fire.**

**Do NOT use a patch cord to extend the power cables.**

## Positioning of the Tank

- Make sure that during the positioning there are no nearby sources of heat, electricity and shock in areas adjacent to the GIR
- You should also avoid that the tank, once located, is not in contact with materials that could compromise the integrity such as acids or corrosive products
- Make sure that once it is located on the floor that it is stable and straps will pass over the top of the tank.

 **Atlantis**

 **PortaFUEL** DIESEL BOX & TOOLBOX



# Obligations & Maintenance

**Safety requirements for operators.**

**Obligation of the main operators.**

**TRANSPORTER: must check in particular that dangerous goods are allowed to carry the carriage according to the ADR:**

- Ensure that the documentation required is carried in the transport unit
- Visually make sure that vehicles and tanks do not show obvious defects, loss and / or lack of equipment
- Verify that the vehicles were not overloaded
- Make sure that the labels are affixed Class 3.

## Maintenance

1. Inspect and clean the strainer on the inlet hose or pipe monthly
2. Clean the metal "mouth" portion of the battery clips with steel wool monthly to ensure good electrical connection to the battery
3. Hoses should be inspected annually. Replace if cracked or worn
4. Rotor and vanes will eventually wear, and should be replaced if pump performance degrades. See the "operational problems" section to determine if replacement is needed
5. Drain hoses and pump and store in a clean, dry place when not in use.

 Atlantis

 PortaFUEL DIESEL BOX & TOOLBOX

# Operational Problems

PROBLEM	POSSIBLE CAUSE	SOLUTION
<b>Pump won't prime</b>	<ol style="list-style-type: none"> <li>1. Suction line problem</li> <li>2. Outlet is blocked</li> <li>3. Bypass valve open</li> <li>4. Vanes are sticking</li> <li>5. Excessive rotor and/or wear</li> </ol>	<ul style="list-style-type: none"> <li>- Check for leak or obstruction in suction hose or pipe</li> <li>- Check to make sure outlet hose and nozzle are clear and operating correctly</li> <li>- Remove and inspect valve, must move freely &amp; free of debris</li> <li>- Check vanes and slots for nicks, burrs &amp; wear</li> <li>- Replace rotor and vanes.</li> </ul>
<b>Pump hums but won't dispense fluid</b>	<ol style="list-style-type: none"> <li>1. Dirt or rust in pump cavity</li> <li>2. Broken rotor key</li> <li>3. Motor failure</li> </ol>	<ul style="list-style-type: none"> <li>- Clean out pump cavity</li> <li>- Remove all debris &amp; replace key</li> <li>- Return to place of purchase.</li> </ul>
<b>Low Flow</b>	<ol style="list-style-type: none"> <li>1. Excessive dirt in filter</li> <li>2. Restriction on the outlet or in the inlet</li> <li>3. Excessive rotor or vane wear</li> <li>4. Low fluid level</li> </ol>	<ul style="list-style-type: none"> <li>- Remove and clean or replace filter</li> <li>- Long and small ID hoses, and automatic nozzles will reduce the flow rate.</li> <li>- Use higher flow components</li> <li>- Replace rotor and vanes</li> <li>- Fill Tank.</li> </ul>
<b>Pump runs slowly</b>	<ol style="list-style-type: none"> <li>1. Incorrect voltage</li> <li>2. Vanes sticking</li> <li>3. Wiring problem</li> <li>4. Motor problem</li> </ol>	<ul style="list-style-type: none"> <li>- Check incoming power</li> <li>- Check vanes and slots for nicks, burrs &amp; wear</li> <li>- Check for loose connections</li> <li>- Return to place of purchase.</li> </ul>
<b>Motor surface temperature gets hotter than 100°C (212°F)</b>	<ol style="list-style-type: none"> <li>1. Fluid is too thick</li> <li>2. Motor ran more than 30 minutes</li> <li>3. Excessive dirt in filter</li> <li>4. Blocked pump rotor</li> </ol>	<ul style="list-style-type: none"> <li>- Fluid must not be thicker than diesel fuel</li> <li>- Motor is designed for a maximum "on" time of 30 minutes. Motor must be allowed to cool down before using again (except for model PA1 60)</li> <li>- Remove and clean filter</li> <li>- Clean and check rotor and vanes.</li> </ul>
<b>Motor will not turn on</b>	<ol style="list-style-type: none"> <li>1. Battery dead or low (pump 12 - 24V)</li> <li>2. Fuse in power cord is blown (pump 12 - 24V)</li> <li>3. Switch failure</li> </ol>	<ul style="list-style-type: none"> <li>- Check battery</li> <li>- A blown fuse often indicates a problem with the free rotation of the motor</li> <li>- Inspect for dirt or debris in pump cavity</li> <li>- Replace fuse with same value</li> <li>- Replace switch</li> </ul>
<b>Liquid leaks</b>	<ol style="list-style-type: none"> <li>1. Bad O-ring gaskets</li> <li>2. Dirty shaft seal</li> <li>3. Bad shaft seal</li> <li>4. Incompatible fluid</li> <li>5. Loose fasteners</li> </ol>	<ul style="list-style-type: none"> <li>- Check all o-ring gaskets</li> <li>- Clean seal and seal cavity</li> <li>- Replace seal</li> <li>- The liquid must be compatible with HNBR seals and cast iron</li> <li>- Tighten fasteners.</li> </ul>

# Warranty

---

**All the tanks named DieselBox are supplied with a 2 year tank warranty and a 1 year pump warranty, for manufacturing defect only.**

The guarantee is valid for all users in possession of our product within the period stated above. The guarantee is only for repair or replacement.

Repair operation must be only made by Atlantis Tanks Group Ltd.

Shipping costs for any repair or replacement shall be covered by the customer. Should one of our engineers be needed on site, all costs of travel and stay are chargeable to the customer.

**Warranty does not cover the following:**

- If the product is damaged during transport
- If the assembly and installation of the product do not follow the instructions of the manufacturer
- If the product has been modified or changed
- If the product usage and maintenance is not in accordance with the manufacturer's manual

The guarantee is not valid for the parts exposed to wearing such as hoses, sealing etc.

Warranty period starts from the date of delivery document made out by Atlantis Tanks Group Ltd.

These tanks are tested to 0.2bar to guarantee a product before use by the customer.

**Jon Mytton, Managing Director**

 Atlantis

 PortaFUEL DIESEL BOX & TOOLBOX

# Warnings & Equipment

## Warnings

**Please follow the indications here below in order to avoid damage of the tank's polyethylene shell:**

- Do not climb over the tank or sit on the unit
- Do not stack/leave heavy equipment on the tank
- Do not hit the tank with blunt objects
- During handling the tank must not suffer hits, shocks, flexing or torsions
- Never fill up the tank or leave the tank full on an irregular surface
- Do not place or leave the tank when full under the sun for a long time, during storage or transport
- Keep the temperature between -10C and +40C
- Fill up the tank with the nozzle tilted in order to allow excess air to escape from the neck of the inlet and avoid swelling of the tank
- During transport the tank should be tied following the indications of this user manual.

## Equipment On Board

The ADR requires that during the transport of dangerous materials, certain equipment should be found on board as shown from Chap. 8.1.4.1. that says: the transport unit carrying dangerous goods in accordance with 1.1.3.6 must be equipped with a portable fire extinguisher adapted to classes of flammability A, B and C, a minimum capacity of 2 kilograms of powder (or capacity corresponding to more acceptable extinguishing agent).



# Monthly Maintenance Checks

INSPECTIONS	STATUS	DATE	SIGNATURE

DIESEL BOX & DIESEL TOOLBOX: MONTHLY MAINTENANCE CHECKS



# Pump Certification

**Called:** TRANSFER PUMP FOR DIESEL OIL

**Model:** PIUSI BP3000 12V

**Year of manufacturing:** 2017

**- IS COMPLIANT -**

**To the following directives:**

- 89/392/EEC as further amendment up to 98/37/EC
- 73/23/EEC
- 89/336/EEC

**And is also compliant to the following harmonized standards:**

EN 292-2; EN 294; EN 50081-1, EN 50082-1, EN 55011, EN 55014, EN 60204, EN 60034-5, EN 60529

By virtue of this Declaration it is hereby certified that the unit has been installed, in compliance with the state of the art, with a permanent and immovable connection to the following container, also manufactured by the aforesaid company.

**MODEL:** DIESELBOX 440

**SERIAL NUMBER:**

**YEAR:** 2017

**MATERIAL:** S235JR EN 10025

**PUMP:** PIUSI BP3000

**DEFINITION:** FUEL TANK

ITEM	MATERIAL	TYPE
DIESEL BOX	S235JR EN 10025	TRANSPORTABLE TANK

**TESTED PART:** TANK

**TYPE TEST:** HYDRAULICTEST

**PRESSURE FLUID:** 0,2 BAR

**TESTING TIME:** 1 HOUR

PRESSURE PART	FLUID	TEMPERATURE	BAR	RESULT
Tank	Water	Ambient	0,2	Positive

**Atlantis**

**PortaFUEL** DIESEL BOX & TOOLBOX

# Declaration of Conformity

The undersigned: PIUSI S.p.A  
Via Pacinotti c.m.- z.i.Rangavino  
46029 Suzzara - Mantova - Italia

**Hereby states** under its own responsibility, that the equipment described below:

Description : **Pump for the transfer of diesel fuel**

Model : **By-pass 3000 12 - 24 Vdc / Carry 3000 / Battery kit 3000**

Serial number: refer to Lot Number shown on CE plate affixed to product

Year of manufacture: refer to the year of production shown on the CE plate affixed to the product is in conformity with the legal provisions indicated in the directives :

- **Machine Directive 2006/42/EC**

- **Electromagnetic Compatibility Directive 2014/30/EU**

The documentation is at the disposal of the competent authority following motivated request at Piusi S.p.A. or following request sent to the e-mail address: doc.tec@piusi.com

The person authorised to compile the technical file and draw up the declaration is Otto Varini as legal representative

Suzzara, 20/04/2016



Otto Varini  
legal representative

**Atlantis**  
BE LEGENDARY

## Here for you

Tel: 0330 999 1100

Email: sales@atlantistanks.co.uk

www.atlantistanks.co.uk

Legend House

Station Road

Ferryhill

DL17 0BP

**Atlantis**

**PortaFUEL** DIESEL BOX & TOOLBOX

# POLLICUBE



## General Description

- These tanks are designed for storage and delivery of fuel to vehicles and equipment.
- They are made from polyethylene and are suitable for the storage of Diesel, AdBlue®, Kerosene, Antifreeze and other chemicals (please check before usage). Also note that the pump provided on these tanks may not be suitable for the chemical being stored in the tank, please check before usage
- The pump is a self-priming, positive displacement, rotary vane unit which operates on a 12v DC power (options for 24v DC power are available upon request), and delivers a flow rate of approximately 40 litres per minute
- The pump has a built-in bypass valve that keeps the operating pressure below 1, 3 bar (18 psi). The motor has a 30 minute duty cycle.

**Atlantis**

**PortaFUEL** POLLICUBE



# Safety Precautions

---

## **Improper use of installation of this product can cause serious bodily injury or death!**

- Not for use with Gasoline, Alcohol or other liquid with a flash point below 40°C (104°F)
- Not for use in hazardous locations
- Not for use with fluids thicker than Diesel fuel
- Not for use with fluids for human consumption or fluids containing water
- Not for continuous duty applications.

# EC Declaration of Conformity

**Declares that the tanks named DIP.P230, DIP.P440, ADB.P230, and ADB.P440 as transportable tanks for fuel UN1202, Diesel & AdBlue® whose declaration is referred to, and respect the applicable regulation mentioned below:**

**The supplier:**

Atlantis Tanks Group Ltd  
 Legend House  
 Ferryhill  
 Durham  
 DL17 0BP

**Model Code:**

**Serial Number:**

**Complies with the following directives of the European Council:**

- 2006/42/CE, Machinery Directive
- 2006/95/CE, Low Voltage Directive
- 2004/108/CE, Electromagnetic Compatibility Directive

**Declares also to have used in manufacturing the following technical standards:**

- UNI EN 12100:2010

**Safety of machinery – General principles for design – Risk assessment and risk reduction:**

- CEI EN 60204-1

**Safety of machinery – Electrical equipment of machines – Part 1: General requirements:**

- ADR PART. 1.1.3.1 C

**European agreement concerning the International transport of dangerous goods on road (ADR).**



# Preliminary Operations

---

1. Using the key supplied with the unit, open the tank cover, make sure that during transport the tank has not been damaged
2. Position the tank on a secure surface, in a ventilated area, making sure that it is securely fastened during transportation. ATTENTION, once full with liquid, the sloshing force could provoke tank movements
3. Unscrew the filter plug and fill up tank with diesel after having verified that the pump is unplugged. For this operation wear appropriate safety clothes and devices like glasses and gloves
4. Once the tank is full, close and secure the filler plug
5. If you have received a flow meter, this will need calibrating.

# Electrical Installation

---

## Electrical Installation – 12v or 24v

1. Connect the battery clips to a suitable battery, capable of delivering the necessary voltage and current (see pump spec)
2. The Red clip is attached to the positive (+) battery terminal
3. The Black clip is attached to the negative (-) battery terminal or to the vehicle frame
4. If the power cable provided is not long enough, have it replaced by an authorized electrician.

**Avoid sparks that could cause a fire. Do NOT use a patch cord to extend the power cables.**

## Electrical Installation – 230v

The pump must be provided with a safety device of 30mA minimum Din standard. The plug must be connected to an earthed SHUKO socket. Do not cut or replace the provided plug.

**Avoid sparks that could cause a fire. Do NOT use a patch cord to extend the power cables.**

# Maintenance

---

1. Inspect and clean the strainer on the inlet hose or pipe monthly
2. Clean the metal “mouth” portion of the battery clips with steel wool monthly to ensure a good electrical connection to the battery
3. Hoses should be inspected annually. Replace if cracked or worn
4. Rotor and vanes will eventually wear, and should be replaced if pump performance degrades. See the “operational problems” section to determine if replacement is needed
5. Drain hoses and pump and store in a clean, dry place when not in use.



# Operational Problems

PROBLEM	POSSIBLE CAUSE	SOLUTION
<b>Pump won't prime</b>	<ol style="list-style-type: none"> <li>1. Suction line problem</li> <li>2. Outlet is blocked</li> <li>3. Bypass valve open</li> <li>4. Vanes are sticking</li> <li>5. Excessive rotor and/or wear</li> </ol>	<ul style="list-style-type: none"> <li>- Check for leak or obstruction in suction hose or pipe</li> <li>- Check to make sure outlet hose and nozzle are clear and operating correctly</li> <li>- Remove and inspect valve, must move freely &amp; free of debris</li> <li>- Check vanes and slots for nicks, burrs &amp; wear</li> <li>- Replace rotor and vanes.</li> </ul>
<b>Pump hums but won't dispense fluid</b>	<ol style="list-style-type: none"> <li>1. Dirt or rust in pump cavity</li> <li>2. Broken rotor key</li> <li>3. Motor failure</li> </ol>	<ul style="list-style-type: none"> <li>- Clean out pump cavity</li> <li>- Remove all debris &amp; replace key</li> <li>- Return to place of purchase.</li> </ul>
<b>Low Flow</b>	<ol style="list-style-type: none"> <li>1. Excessive dirt in filter</li> <li>2. Restriction on the outlet or in the inlet</li> <li>3. Excessive rotor or vane wear</li> <li>4. Low fluid level</li> </ol>	<ul style="list-style-type: none"> <li>- Remove and clean or replace filter</li> <li>- Long and small ID hoses, and automatic nozzles will reduce the flow rate.</li> <li>- Use higher flow components</li> <li>- Replace rotor and vanes</li> <li>- Fill Tank.</li> </ul>
<b>Pump runs slowly</b>	<ol style="list-style-type: none"> <li>1. Incorrect voltage</li> <li>2. Vanes sticking</li> <li>3. Wiring problem</li> <li>4. Motor problem</li> </ol>	<ul style="list-style-type: none"> <li>- Check incoming power</li> <li>- Check vanes and slots for nicks, burrs &amp; wear</li> <li>- Check for loose connections</li> <li>- Return to place of purchase.</li> </ul>
<b>Motor surface temperature gets hotter than 100°C (212°F)</b>	<ol style="list-style-type: none"> <li>1. Fluid is too thick</li> <li>2. Motor ran more than 30 minutes</li> <li>3. Excessive dirt in filter</li> <li>4. Blocked pump rotor</li> </ol>	<ul style="list-style-type: none"> <li>- Fluid must not be thicker than diesel fuel</li> <li>- Motor is designed for a maximum "on" time of 30 minutes. Motor must be allowed to cool down before using again (except for model PA1 60)</li> <li>- Remove and clean filter</li> <li>- Clean and check rotor and vanes.</li> </ul>
<b>Motor will not turn on</b>	<ol style="list-style-type: none"> <li>1. Battery dead or low (pump 12 - 24V)</li> <li>2. Fuse in power cord is blown (pump 12 - 24V)</li> <li>3. Switch failure</li> </ol>	<ul style="list-style-type: none"> <li>- Check battery</li> <li>- A blown fuse often indicates a problem with the free rotation of the motor</li> <li>- Inspect for dirt or debris in pump cavity</li> <li>- Replace fuse with same value</li> <li>- Replace switch</li> </ul>
<b>Liquid leaks</b>	<ol style="list-style-type: none"> <li>1. Bad O-ring gaskets</li> <li>2. Dirty shaft seal</li> <li>3. Bad shaft seal</li> <li>4. Incompatible fluid</li> <li>5. Loose fasteners</li> </ol>	<ul style="list-style-type: none"> <li>- Check all o-ring gaskets</li> <li>- Clean seal and seal cavity</li> <li>- Replace seal</li> <li>- The liquid must be compatible with HNBR seals and cast iron</li> <li>- Tighten fasteners.</li> </ul>

# Warranty

**All the tanks named DIP.P230, DIP.P440, ADB.P230 and ADB.P440 are supplied with a 2 year tank warranty and a 1 year pump warranty, for manufacturing defect only.**

The guarantee is valid for all users in possession of our product within the period stated above. The guarantee is only for repair or replacement.

Repair operation must be only made by Atlantis Tanks Group Ltd.

Shipping costs for any repair or replacement shall be covered by the customer. Should one of our engineers be needed on site, all costs of travel and stay are chargeable to the customer.

**Warranty does not cover the following:**

- If the product is damaged during transport
- If the assembly and installation of the product do not follow the instructions of the manufacturer
- If the product has been modified or changed
- If the product usage and maintenance is not in accordance with the manufacturer's manual

The guarantee is not valid for the parts exposed to wearing such as hoses, sealing etc.

Warranty period starts from the date of delivery document made out by Atlantis Tanks Group Ltd.

These tanks are tested to 0.2bar to guarantee a product before use by the customer.

**Jon Mytton, Managing Director**

 Atlantis

 PortaFUEL POLICUBE

# Warnings

---

## Warnings

**Please follow the indications here below in order to avoid damage of the tank's polyethylene shell:**

- Do not climb over the tank or sit on the unit
- Do not stack/leave heavy equipment on the tank
- Do not hit the tank with blunt objects
- During handling the tank must not suffer hits, shocks, flexing or torsions
- Never fill up the tank or leave the tank full on an irregular surface
- Do not place or leave the tank when full under the sun for a long time, during storage or transport
- Keep the temperature between -10C and +40C
- Fill up the tank with the nozzle tilted in order to allow excess air to escape from the neck of the inlet and avoid swelling of the tank
- During transport the tank should be tied following the indications of this user manual.

# POLLITROLLI Diesel, AdBlue® & Petrol



## General Description

- These tanks are designed for storage and delivery of fuel to vehicles and equipment.
- They are made from polyethylene and are suitable for the storage of:  
 POLLITROLLI Petrol - Gasoline  
 POLLITROLLI Diesel & AdBlue® - Gasoline, Diesel, AdBlue®, Kerosene, Antifreeze and other chemicals (please check before usage). Also note that the pump provided on these tanks may not be suitable for the chemical being stored in the tank, please check before usage.
- The pump is a self-priming, positive displacement, rotary vane unit which operates on a 12v DC power (options for 24v DC power are available upon request), and delivers a flow rate of approximately 40 litres per minute. The pump has a built-in bypass valve that keeps the operating pressure below 1, 3 bar (18 psi). The motor has a 30 minute duty cycle.

**Atlantis**

**PortaFUEL** POLLITROLLI



# Safety Precautions

**Improper use of installation of this product can cause serious bodily injury or death!**

## **POLLITROLI Diesel & AdBlue®**

- Not for use with Gasoline, Alcohol or other liquid with a flash point below 40°C (104°F)
- Not for use in hazardous locations
- Not for use with fluids thicker than Diesel fuel
- Not for use with fluids for human consumption of fluids containing water
- Not for continuous duty applications.

## **POLLITROLI Petrol**

- Not for use with Diesel fuel, alcohol or other liquids
- Not for use in hazardous locations
- Not for use with fluids thicker than Gasoline
- Do not use to transfer fluids into aircraft
- Not for use with fluids for human consumption of fluids containing water
- Not for continuous duty applications.

AdBlue® is a registered trade mark of the German Association of the Automotive Industry and Atlantis Tanks Group are not associated with AdBlue® or the German Association of the Automotive Industry.

 Atlantis

 PortaFUEL POLLITROLI

# Specifications & Equipment

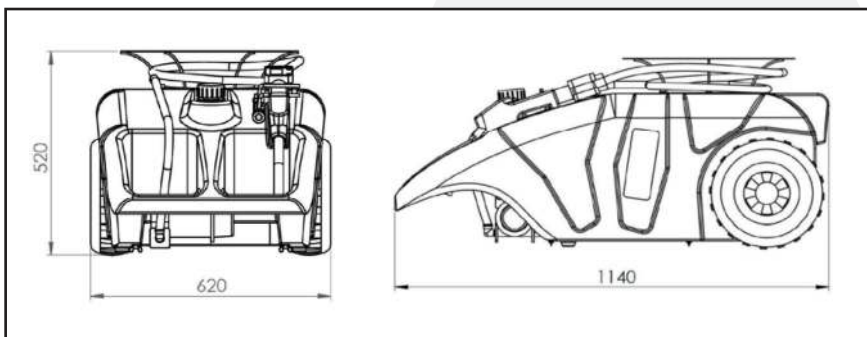
## Specifications

**Capacity:** 110 litre

**Dimensions:** 620x520mm h1140mm

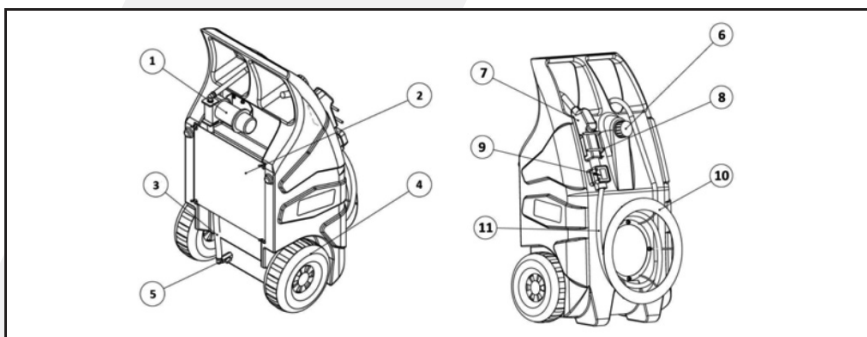
**Total weight when empty:** 25 kg

**Material:** PE (Polyethylene)



## Equipment

- |                     |                    |                           |
|---------------------|--------------------|---------------------------|
| 1. Pump             | 5. Shut-off Valve  | 9. K24 Meter (optional)   |
| 2. Masking Plate    | 6. Ventilation Cap | 10. Hose Holder           |
| 3. Suction Hose     | 7. Nozzle          | 11. Dispensing Hose (4mt) |
| 4. Pneumatic Wheels | 8. Nozzle Holder   |                           |



**Atlantis**

**PortaFUEL** POLLITROLI

# Compliance

## TANK IN EXEMPTION OF ADR

### 1.1.3.1 Exemptions related to the nature of the transport operation

The carriage undertaken by enterprises which is ancillary to their main activity, such as deliveries to or returns from building or civil engineering sites, or in relation to surveying, repairs and maintenance, in quantities of not more than 450 litres per packaging, including intermediate bulk containers (IBCs) and large packagings, and within the maximum quantities specified in 1.1.3.6. Measures shall be taken to prevent any leakage of contents in normal conditions of carriage. These exemptions do not apply to Class 7.

## Preliminary Operations

1. Make sure that during transport the tank has not been damaged
2. Position the tank on a secure surface, in a ventilated area, making sure that it is securely fastened during transportation.  
**ATTENTION:** once full with liquid, the sloshing force could cause tank movements. The tank when completely empty is not stable in vertical position: please use the tank in vertical position with at least 10 litres of liquid inside
3. Suction Info: the total capacity of the tank is 110 litres, 100 litres are available in vertical position, the last 10 litres (reserve) are available in horizontal position
4. Unscrew the filter plug and fill up tank with diesel after having verified that the pump is unplugged. For this operation wear appropriate safety clothes and devices like glasses & gloves
5. Once the tank is full, close and secure the filler plug
6. If you have received a flow meter, this will need calibrating

# Electrical Installation

---

## Electrical Installation – 12v or 24v

1. Connect the battery clips to a suitable battery, capable of delivering the necessary voltage and current (see pump spec)
2. The Red clip is attached to the positive (+) battery terminal
3. The Black clip is attached to the negative (-) battery terminal or to the vehicle frame  
The Green clip must be attached to the ground connection (**POLLITROLI Petrol only**)
4. If the power cable provided is not long enough, have it replaced by an authorized electrician.

**Avoid sparks that could cause a fire. Do NOT use a patch cord to extend the power cables.**

## Electrical Installation – 230v (POLLITROLI Diesel & AdBlue® only)

The pump must be provided with a safety device of 30mA minimum Din standard. The plug must be connected to an earthed SHUKO socket. Do not cut or replace the provided plug. Avoid sparks that could cause a fire: Do NOT use a patch cord to extend the power cables.

**Avoid sparks that could cause a fire. Do NOT use a patch cord to extend the power cables.**

# Maintenance

---

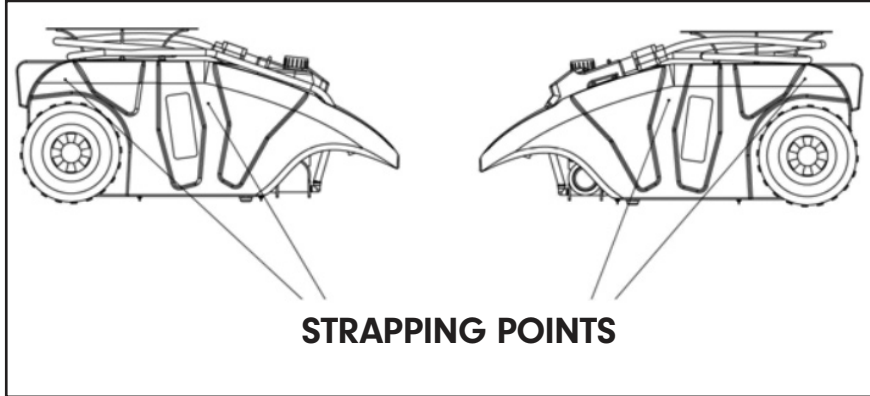
1. Inspect and clean the strainer on the inlet hose or pipe monthly
2. Clean the metal “mouth” portion of the battery clips with steel wool monthly to ensure good electrical connection to the battery
3. Hoses should be inspected annually. Replace if cracked or worn
4. Rotor and vanes will eventually wear, and should be replaced if pump performance degrades. See the “operational problems” section to determine if replacement is needed
5. Drain hoses and pump and store in a clean, dry place when not in use.



# Transport

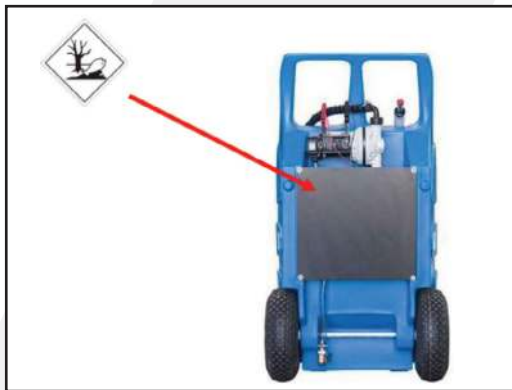
**If positioned on a vehicle and fixed using strapping belts:**

- The tank must lie in a horizontal position
- The straps must be wrapped around the tank passing by the points indicated here below:



**WARNING:**

During transport please remember to shut-off the valve on the bottom of the tank (see equipment picture – point nr.5). To start dispensing please open the same valve.



**PLEASE NOTE:**

If not already applied, before use, make sure to apply the pictograms on the back of the unit.

# Operational Problems

PROBLEM	POSSIBLE CAUSE	SOLUTION
<b>Pump won't prime</b>	<ol style="list-style-type: none"> <li>1. Suction line problem</li> <li>2. Outlet is blocked</li> <li>3. Bypass valve open</li> <li>4. Vanes are sticking</li> <li>5. Excessive rotor and/or wear</li> </ol>	<ul style="list-style-type: none"> <li>- Check for leak or obstruction in suction hose or pipe</li> <li>- Check to make sure outlet hose and nozzle are clear and operating correctly</li> <li>- Remove and inspect valve, must move freely &amp; free of debris</li> <li>- Check vanes and slots for nicks, burrs &amp; wear</li> <li>- Replace rotor and vanes.</li> </ul>
<b>Pump hums but won't dispense fluid</b>	<ol style="list-style-type: none"> <li>1. Dirt or rust in pump cavity</li> <li>2. Broken rotor key</li> <li>3. Motor failure</li> </ol>	<ul style="list-style-type: none"> <li>- Clean out pump cavity</li> <li>- Remove all debris &amp; replace key</li> <li>- Return to place of purchase.</li> </ul>
<b>Low Flow</b>	<ol style="list-style-type: none"> <li>1. Excessive dirt in filter</li> <li>2. Restriction on the outlet or in the inlet</li> <li>3. Excessive rotor or vane wear</li> <li>4. Low fluid level</li> </ol>	<ul style="list-style-type: none"> <li>- Remove and clean or replace filter</li> <li>- Long and small ID hoses, and automatic nozzles will reduce the flow rate.</li> <li>- Use higher flow components</li> <li>- Replace rotor and vanes</li> <li>- Fill Tank.</li> </ul>
<b>Pump runs slowly</b>	<ol style="list-style-type: none"> <li>1. Incorrect voltage</li> <li>2. Vanes sticking</li> <li>3. Wiring problem</li> <li>4. Motor problem</li> </ol>	<ul style="list-style-type: none"> <li>- Check incoming power</li> <li>- Check vanes and slots for nicks, burrs &amp; wear</li> <li>- Check for loose connections</li> <li>- Return to place of purchase.</li> </ul>
<b>Motor surface temperature gets hotter than 100°C (212°F)</b>	<ol style="list-style-type: none"> <li>1. Fluid is too thick</li> <li>2. Motor ran more than 30 minutes</li> <li>3. Excessive dirt in filter</li> <li>4. Blocked pump rotor</li> </ol>	<ul style="list-style-type: none"> <li>- Fluid must not be thicker than diesel fuel</li> <li>- Motor is designed for a maximum "on" time of 30 minutes. Motor must be allowed to cool down before using again (except for model PA1 60)</li> <li>- Remove and clean filter</li> <li>- Clean and check rotor and vanes.</li> </ul>
<b>Motor will not turn on</b>	<ol style="list-style-type: none"> <li>1. Battery dead or low (pump 12 - 24V)</li> <li>2. Fuse in power cord is blown (pump 12 - 24V)</li> <li>3. Switch failure</li> </ol>	<ul style="list-style-type: none"> <li>- Check battery</li> <li>- A blown fuse often indicates a problem with the free rotation of the motor</li> <li>- Inspect for dirt or debris in pump cavity</li> <li>- Replace fuse with same value</li> <li>- Replace switch</li> </ul>
<b>Liquid leaks</b>	<ol style="list-style-type: none"> <li>1. Bad O-ring gaskets</li> <li>2. Dirty shaft seal</li> <li>3. Bad shaft seal</li> <li>4. Incompatible fluid</li> <li>5. Loose fasteners</li> </ol>	<ul style="list-style-type: none"> <li>- Check all o-ring gaskets</li> <li>- Clean seal and seal cavity</li> <li>- Replace seal</li> <li>- The liquid must be compatible with HNBR seals and cast iron</li> <li>- Tighten fasteners.</li> </ul>

# Warranty

**All the tanks named PET.P100, DIT.P100, ADT.P100 are supplied with a 1 year tank warranty and a 1 year pump warranty, for manufacturing defect only.**

The guarantee is valid for all users in possession of our product within the period stated above. The guarantee is only for repair or replacement.

Repair operation must be only made by Atlantis Tanks Group Ltd.

Shipping costs for any repair or replacement shall be covered by the customer. Should one of our engineers be needed on site, all costs of travel & stay are chargeable to the customer.

**Warranty does not cover the following:**

- If the product is damaged during transport
- If the assembly and installation of the product do not follow the instructions of the manufacturer
- If the product has been modified or changed
- If the product usage and maintenance is not in accordance with the manufacturer's manual
- If the product has been damaged for not un-authorized arbitrary controls

The guarantee is not valid for the parts exposed to wearing such as hoses, sealing etc.

Warranty period starts from the date of delivery document made out by Atlantis Tanks Group Ltd.

**Jon Mytton, Managing Director**

 Atlantis

 PortaFUEL POLLITROLI

# PORTATANK



## General Description

- PORTATANK is a mobile fuel tank with a nominal volume of 910 L / 1900 L / 2900 L, which allows fuel to be delivered and discharged.
- The fuel tank fulfils the requirements of the European Agreement concerning the International Carriage of Dangerous Goods by Road, dated 01 January 2005 (ADR 2005).

**Atlantis**

**PortaFUEL** POLLITROLI



# Technical Data & Features

<b>Tank Capacity (L)</b>	1000	2000	3000
<b>Effective Capacity (L)</b>	910	1900	2900
<b>Material of Container</b>	Steel Plate	Steel Plate	Steel Plate
<b>Material of End Caps</b>	Steel Plate	Steel Plate	Steel Plate
<b>Wall Thickness (mm)</b>	3	3	3
<b>Colour of container</b>	Grey, RAL 7015	Grey, RAL 7015	Grey, RAL 7015
<b>Colour of lid</b>	Orange, RAL 2001	Orange, RAL 2001	Orange, RAL 2001
<b>UN Approval</b>	Un31A/Z/... */PL/SPAWMAL/ 2364/1313	Un31A/Z/... */PL/SPAWMAL/ 4565/2536	Un31A/Z/... */PL/SPAWMAL/ 6588/3660
<b>UN Certificate</b>	UN/16/1476/11	UN/16/1501/11	Tank Capacity (L)
<b>Dims L x W x H (mm)</b>	Tank Capacity (L)	Tank Capacity (L)	UN/16/1591/13
<b>Weight (kg)</b>	563	836	1160

# Specifications

- Tanker connector
- Level indicator
- Overfill sensor
- Ventilation valve
- Double wall steel tank
- 1 piece suction set 1" for pump with vane, suction hose, non-return valve and strainer
- 3 pieces suction sets 3/4" for plant with suction tube, non-return valve and strainer
- 3 pieces return sets 1/2" from plant
- Movable under load
- Universal securing trap for shackle
- Lockable cap

#### Suitable for:

- Heating oil and diesel fuels

#### Special notes:

- Can be moved by a forklift
- Maximum 3 empty tanks can be stacked
- Maximum 2 full tanks can be stacked
- 3 outlets for delivery/return with closed cover
- European ADR Certificate for transportation of dangerous liquids on public roads
- Designation as per ADR regulations



1. Ventilation Valve
2. 3" Fill Point (Tanker Connector)
3. Vent ball valve for refuelling
4. 1" Suction for pump with vane, suction hose, non-return valve & strainer
5. Overfill sensor
6. Level indicator
7. 3 pieces suction sets 3/4" for plant with suction tube, non-return valve & strainer
8. 3 pieces suction sets 1/2" for plant

# Operation

## **The mobile fuel tank was planned and constructed in such a way that it is as robust, safe, and low maintenance as possible.**

After delivery, it should be confirmed that the tank's equipment is complete, and that there is no transport damage. After the pump set (if not already present) has been installed, and after filling with fuel, the tank is ready for operation.

### **Because of the type of liquid stored, and the possible environmental damage resulting from it, the following instructions are to be observed:**

- The fuel tank is to be filled only via a sealed connection to the fill point. The tank must not be overfilled!
- Isolation valve must be isolated in transit.
- To prevent contamination and damage to the pump system, no contaminated fuel may be stored in the tank!
- The pump's operating instructions are to be read before commissioning and use, and they are to be complied with.
- Filling and discharging may take place only under the supervision of an authorized employee.
- When filling with the tanker connector open the vent ball valve, then close it again on completion of filling.
- The fuel tank must not be damaged during transport or storage. The tank's equipment is to be maintained in a usable condition at all times.
- The filter on the suction hose should also be cleaned if necessary when the supply rate is too slow.
- The system is to be protected from interference by unauthorized persons
- Any modifications to the design, equipment, and purpose of the system are forbidden without the agreement of the manufacturer.
- If the fuel tank or a part of its equipment is damaged, then the system is to be taken out of operation until the defect is corrected. If a leak in the tank is observed, then the fuel is to be pumped into another container. The system's supplier is to be informed.

# Transport Equipment

**Every transport vehicle which is also required to fulfil requirements arising from other regulations must have the following equipment:**

- Fastening belts for fixing and securing the fuel tank during transport
- At least one portable 2kg fire extinguisher with a seal, stamp of conformity as per the officially recognized standards, and date of expiration (month and year)
- At least one wheel chock per vehicle: its size must be appropriate to the vehicle weight and the wheel diameter
- Two self-supporting warning indicators (e.g. reflective warning cones or triangles, or orange flashing warning lights with their own power supply)
- A suitable high visibility waistcoat or clothing for each employee on the transport vehicle.
- Hand lamp.

## Training of Driver

**The driver of the transport vehicle must be trained in the handling of dangerous goods as per the applicable directives.**

No additional training is necessary for driver of vehicles transporting diesel, heating oil, or biodiesel.

# Transport & Storage

## **The fuel tank is to be carried on suitable vehicles which are appropriately marked as per ADR regulations.**

- The loading surface must be flat and without sharp edges
- The filled fuel tank may be loaded and unloaded onto/off the vehicle only by means of a forklift or a crane, and using correctly fixed load bearers. For lifting and moving the system, no other parts may be used which are not intended for the purpose.
- Pushing or rolling the fuel tank is forbidden
- Transport may take place only when the system's power supply is switched off, its valves and nozzle are closed, its hoses and cables are rolled up, and when the fuel cap is closed.
- In transport vehicles carrying dangerous goods, no passengers other than the vehicle's crew may be carried
- The vehicle's crew must be familiar with the fire extinguishing procedures
- It is forbidden to get onto the vehicle with illumination equipment which has an open flame. In addition, the illumination equipment used may have no metal surfaces which could cause sparks. When loading the tank with fuel, smoking is forbidden in vehicles and in their vicinity.
- The engine must be stopped when charging or discharging the tank, unless it is required for operation of the pumps or other fueling/discharging equipment, or if the regulations of the country in which the vehicle is situated permit this
- The vehicle's driver may leave a vehicle loaded with dangerous goods only after he has prevented its movement by means of the parking brake
- A transport vehicle carrying dangerous goods may have no more than one trailer.

# Transport Documentation

---

**In addition to documents required under other regulations, the following documents must be present in the transport vehicle:**

- **Delivery note**
- **Written operating instructions for the fuel tank**

Written operating instructions must be kept in the driver's cab and must be easily accessible. The shipping company must ensure that the driver understands the operating instructions and can follow them correctly. Transport vehicles which deliver dangerous goods are to be correspondingly marked and fitted with warning stickers as per ADR regulations.

## Safety Regulations

---

**Personnel involved in the delivery of dangerous goods must take appropriate safety measures depending on the type and scope of potential dangers, in order to limit their consequences.**

If there is direct danger to the public, personnel must inform the emergency services immediately and provide them with the necessary information. Duties for personnel are to be found in the ADR regulations.

# Tests

## The owner is responsible for:

- Requesting the relevant authority to carry out periodical tests on the fuel tank. The tests are required to the scope and at the time periods below:

	TEST INTERVAL IN YEARS
<b>Leak Testing (test pressure 0.2 bar)</b>	2 ½
<b>External examination</b>	2 ½
<b>Internal examination</b>	5
<b>Type and designation</b>	5

The dates of the most recent tests of leakage and condition are to be applied to the fuel tank permanently. The month and the year, e.g. 12/08" are to be stamped in the appropriate row on the maker's plate. In addition, a test report is to be written. The owner must retain the reports for the entire working life of the fuel tank. The reports are to be provided with the tank if it is sold.

In the case of a negative test result, the tank/IBC container is to be repaired by persons authorized by the manufacturer.

### The following minimum information must exist for each fuel tank:

- Manufacturer's designation
- Name of the current owner
- Serial number of the IBC container
- Result of the first acceptance testing and of any leak testing (table 1)
- Reports on tests carried out every 2 % and 5 years (table 2)
- Damage and repair report (table 3).

# Stationary Tank Usage

## **PORTATANK can also be used as a stationary tank for storing and dispensing diesel.**

In this case, it is the owner's responsibility that national directives relating to installation and use of this product are complied with. Additionally, local fire and environmental protection measures are to be observed.

## Guarantee

**The manufacturer provides a guarantee on the tank for 5 years from the date of purchase. If a problem should occur despite all quality measures taken, please get in touch with our service contact partners:**

Atlantis Tanks Group Ltd  
Tel 0330 999 1100  
info@atlantistanks.co.uk

If it should be the case that the defect arose during the guarantee period because of incorrect handling or installation of the product, or that the defect arose outside the guarantee period, then the service costs will be charged to the owner.

Standard maintenance of systems, e.g. filter cleaning, battery replacement, calibration of the flow meter, is excluded from the guarantee.

### **The guarantee is annulled through:**

- Damage resulting from incorrect installation and handling of the system
- Maintenance which was neglected, mechanical damage, or vandalism
- Defects which arise from repairs or constructional modifications carried out by an unauthorised service provider
- Change of the purpose of the product.

**Atlantis Tanks Group Ltd is not liable for damage arising from incorrect use nor contraventions to the operating instructions or regulations.**

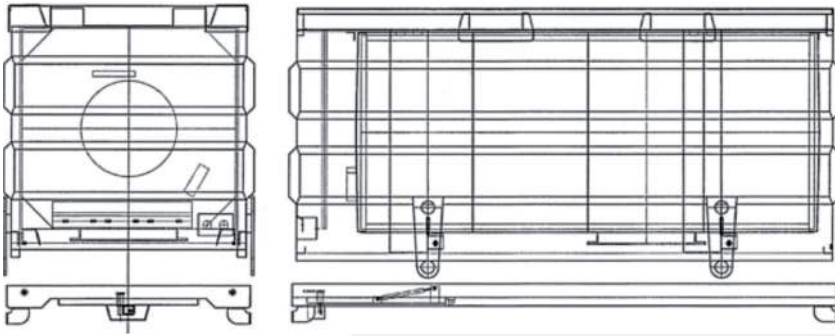
 Atlantis

 PortaFUEL PORTATANK

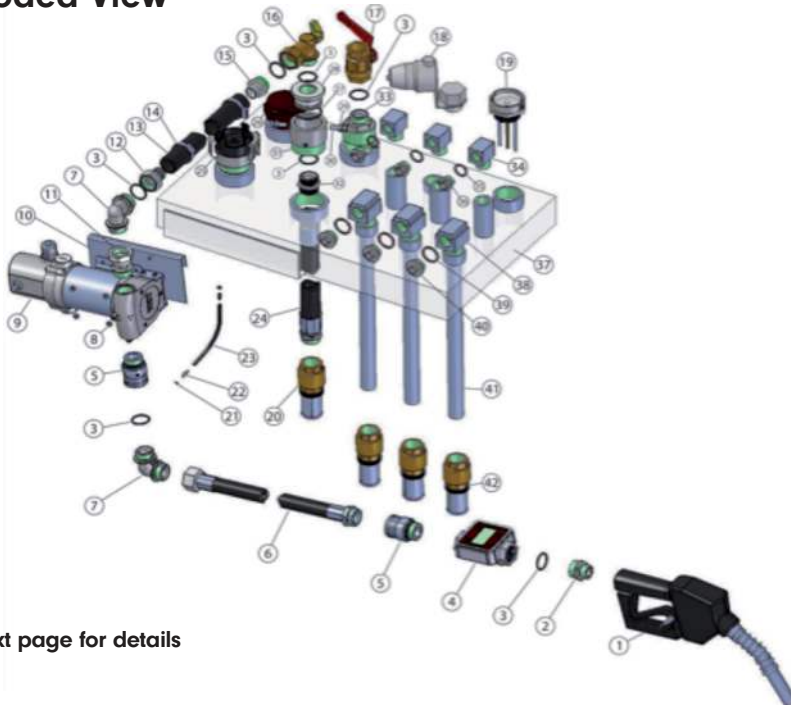


# General View & Exploded View

## General View



## Exploded View



See next page for details

**Atlantis**

**PortaFUEL** PORTATANK

# Exploded View

Item	Qty.	Designation	Product Number
1	1	Automatic nozzle valve	23 176 777
2	1	Adapter	85 369
3	7	O-ring 29 x 2,5	89 111
4	1	In-line meter, digital, NEF	23 295
5	2	Swivel joint	19 625
6	1	Discharge hose for Diesel 6m	23 155 958
7	2	Adapter 90°	85 370 777
8	4	Locking nut	00 044
9	1	Pump 12 V 60 l	23 008
10	1	Console	82 912
11	1	Swage fitting	23 218
12	1	Threaded spout	85 395
13	0,14	Hose for Diesel	80 372
14	2	Worm thread clamp	23 182
15	1	Adapter	85 374
16	1	Angle with lever ball valve	19 779
17	1	Lever ball valve G 1"	19 767
18	1	Overfill sensor	83 723
19	1	Level indicator	04 402
20	1	Foot valve with filter G 1"	19 890
21	2	Sealing ring	89 279
22	2	Threaded spout	89 278
23	3	LDPE-hose	80 327
24	1	Suction hose for Diesel	84 733
25	1	Tank truck-connector	45 143
26	1	Ventilation and breathing valve	45 140
27	1	O-ring 44 x 3	93 233
28	1	Thread adapter	82 911
29	2	Locking nut M8	00 018
30	2	Hex head screw M8	02 243
31	1	Barrel adapter	82 984
32	1	Threaded nipple	85 358
33	1	Barrel adapter	23 216
34	3	Adapter Rücklauf	82 914
35	3	Copper gasket	83 722
36	3	Stopper	83 720
37	1	Steel tank 1000 l / 2000 l / 3000 l	45 200 / 45 202 / 45 204
38	3	Adapter	82 915
39	3	Copper gasket	83 721
40	3	Stopper	83 718
41	3	Suction tube	84 720
42	3	Foot valve with G ¾"	84 546

# Control & Operating Reports

**Table 1:** Control report for IBC container (manufacturer)

	MANUFACTURER	OWNER	OWNER
<b>Company/First name &amp; Surname</b>			
<b>Address Post code, city/country</b>			
<b>Street and house number</b>			
<b>Contact person</b>			
<b>Phone number</b>			

**Table 2:** Acceptance test and periodical testing every 2.5 or 5 years (owner)

NAME OF TESTER	DATE, SIGNATURE	LEAKAGE TEST/ EXAMINATION	EXTERNAL TEST/ EXAMINATION	INTERNAL TEST/ EXAMINATION	FITTINGS	TYPE, DESIGNATION

O = complies X = does not comply





# ADR Certificates

## DIS.P1000 – ADR Cert



# ADR Certificates

## DIS.P2000 – ADR Cert

**COBRO - INSTYTUT BADAWCZY OPAKOWAŃ**  
**COBRO - PACKAGING RESEARCH INSTITUTE**  
 Centrum Certyfikacji Opakowań / Packaging Certification Centre



**CERTIFICATE**  
 No. UN/16/1501/18  
 for packaging for dangerous goods



COBRO - Packaging Research Institute  
 authorize to mark a packaging as follows

 31A/Z... \*P/LSFAW-MAL/4365/2536

Additional marking according to point 6.5.3.2 of ADR

<b>Name of packaging:</b>	intermediate bulk container (IBC) 31A, type ZON 2000, from steel sheet S235 JR, thickness - 3 mm, for transport of liquid dangerous goods (UN 1202), netto mass to 1700 kg
<b>Identification document:</b>	Technical Documentation of the Manufacturer

- Certificate holder: Zakład Usług Spawniczo-Lakierowniczych SPAW-MAL s.z., ul. B. Krzywostego 1, 84-300 Łęborz
- Packaging manufacturer: Zakład Usług Spawniczo-Lakierowniczych SPAW-MAL s.z., ul. B. Krzywostego 1, 84-300 Łęborz
- The packaging complies with the requirements provided in: ADR-2017 *valid in on the certificate issue date*
- Certification scheme: COBRO-UNT (type 3 according to PN-EN ISO/IEC 17067:2014)
- Tests performed in: Transport Packaging Testing Laboratory of COBRO
- Test report No: 171/DOT/2011 + COBRO 02/11a
- Rights and obligations of the Certificate Holder have been laid in the Agreement No DMC/6-UN/11 of 2011.07.20
- Certificate validity period: from 2018.01.01 to 2020.12.31

\* - month and year *two last digits* of production

*period of production and transport possibilities of specific goods in the packaging covered by this certificate should be checked with the submit above-mentioned requirements (according to the UN identification number)*

*The certificate covers only items with identical properties (parameters) as the model(s) submitted for tests and compliant with the requirements laid down herein above.*

*The text in Polish language is binding. Should there exist any difference between the Polish and the English version, the Polish one shall be valid.*

MANAGER  
of Packaging Certification Centre



mgr inż. Andrzej Kłimiński



ACTING DIRECTOR  
of COBRO - Packaging Research Institute



prof. dr inż. dr hab. inż. Hanna Zakrzewska

Warszawa, 2017.12.15

02-942 Warszawa, ul. Kosmonautów 11

# ADR Certificates

## DIS.P3000 – ADR Cert

**COBRO - PACKAGING RESEARCH INSTITUTE**  
Packaging Certification Centre



**CERTIFICATE**

No. UN/16/1591/16

for packaging for dangerous goods



**COBRO - Packaging Research Institute**  
authorize to mark a packaging as follows

 31A/ZL...\*/PL/SPAW-MAL/8388/3660

Additional marking according to point 6.5.2.2 of ADR

Name of packaging: Intermediate bulk container (IBC) 31A, type ZON 3000, from steel sheet S235 JR, thickness - 3 mm, for transport of liquid dangerous goods (UN 1202), netto mass to 2500 kg
Identification document: Technical Documentation of the Manufacturer

- Certificate holder: Zakład Usług Spawalniczo-Lakierowniczych SPAW- MAL s.c., ul. B. Krzywoustego 1, 84-300 Łęgorz
- Packaging manufacturer: Zakład Usług Spawalniczo-Lakierowniczych SPAW- MAL s.c., ul. B. Krzywoustego 1, 84-300 Łęgorz
- The packaging complies with the requirements provided in: ADR -1915
- Certification scheme: COBRO-UNI (type 3 according to PN-EN ISO/IEC 17067:2014)
- Tests performed in: Transport Packaging Testing Laboratory of COBRO and Packaging Laboratory Szechenyi Istvan University w Győr
- Test report No: 118/DOT/2013 and COBRO 02/13a
- Rights and obligations of the Certificate Holder have been laid in the Agreement No DC/6-UN/11 of 2011.07.20
- Certificate validity period: from 2016.07.01 to 2019.06.30

\* month and year of production (two last digits):

In case of packaging and transport peculiarities of specific goods in the packaging covered by this Certificate should be checked each case against above mentioned regulations (instructions by the UN identification number)

The certificate covers only items with identical properties (parameters) as the model(s) submitted for tests and compliant with the requirements laid down herein above.

The text in Polish language is binding. Should there exist any difference between the Polish and the English version, the Polish one shall be valid.

MANAGER  
of Packaging Certification Centre



mgr Andrzej Kłoczek



DIRECTOR  
of COBRO Packaging Research Institute



prof. dr hab. inż. Stanisław Topolnik

WAT239W 2016 06 09

02-942 Warszawa, ul. Korotkietek 11





# Terms & Conditions

This page (together with the documents referred to on it) tells you the terms and conditions on which we supply products ('Products') to you ('Conditions'). Please read these Conditions carefully before ordering any Products from us. You should understand that by ordering any of our Products, you agree to be bound by these Conditions.

**You should print a copy of these Conditions for future reference.**

## 2. YOUR STATUS

By placing an order with us, you confirm that you are legally capable of entering into binding contracts.

By placing an order with us, you also confirm that:

- (a) You are a business that is incorporated and operating in the United Kingdom; or
- (b) You are an individual who is 18 years or older and a sole trader or a partner in a partnership incorporated and operating in the United Kingdom.

We rely on these statements by you in entering into an agreement with you for sale of any Product.

## 3. HOW THE CONTRACT IS FORMED BETWEEN YOU AND US

3.1 After placing an order, you will receive an e-mail from us acknowledging that we have received your order. Please note that this does not mean that your order has been accepted. Your order constitutes an offer to us to buy Products. All orders are subject to acceptance by us, and we will confirm any such acceptance to you by sending you an e-mail that confirms that the Products have been dispatched ('the Dispatch Confirmation'). The contract between us ('Contract') will only be formed when we send you the Dispatch Confirmation.

3.2 The Contract will relate only to those Products whose dispatch we have confirmed in the Dispatch Confirmation. We will not be obliged to supply any other Products which may have been part of your order until the dispatch of such Products has been confirmed in a separate Dispatch Confirmation.

3.3 We may, in our absolute discretion, allow you to cancel the Contract and return the Products at any time within fourteen days after the date on which the Contract is formed. If we agree to cancel the Contract under these circumstances, we will refund the price of the Products after deducting delivery, return and re-stocking costs.

## 4. AVAILABILITY AND DELIVERY

4.1 We shall deliver the Products to the location set out in the Order or such other location as the parties may agree ('Delivery Location').

4.2 We will use our reasonable endeavours in an effort to ensure that your order is fulfilled by the delivery date set out in the Dispatch Confirmation or, if no delivery date is specified, then within 30 days of the date of the Dispatch Confirmation ('Delivery Date').

4.3 Delivery is completed on the completion of unloading of the Products at the Delivery Location.

4.4 Any dates quoted for delivery are approximate only, and the time of delivery is not of the essence. We shall not be liable for any delay in delivery of the Products that is caused by a Force Majeure Event or your failure to provide us with adequate delivery instructions or any other instructions that are relevant to the supply of the Products.

4.5 If we fail to deliver the Products, our liability shall be limited to the costs and expenses incurred by you in obtaining replacement goods of similar description and quality in the cheapest market available, less the price of the Products. We shall have no liability for any failure

 Atlantis

 PortaFUEL

TANK NAME



to deliver the Products to the extent that such failure is caused by a Force Majeure Event or your failure to provide us with adequate delivery instructions or any other instructions that are relevant to the supply of the Products.

4.6 You must inspect the Products on delivery and notify us without delay if you identify any defects.

4.7 If you fail to accept delivery of the Products on the Delivery Date, then, except where such failure or delay is caused by a Force Majeure Event or our failure to comply with our obligations under the Contract:

(a) Delivery of the Products shall be deemed to have been completed on the Delivery Date.

(b) We shall store the Products until delivery takes place and we hold the right to charge you for all related costs and expenses (including insurance). The storage fee applies as follows:

- free of charge for up to 1 month from the originally agreed delivery date.
- > 1 month the charge is £20 per m<sup>2</sup> per week.

4.8 After a period of time, if you have not accepted actual delivery of the Products, we may resell or otherwise dispose of part or all of the Products and, after deducting reasonable storage and selling costs, account to you for any excess over the price of the Products or charge you for any shortfall below the price of the Products.

4.9 Additional terms and conditions relating to delivery are available on our web site. Please read those terms and conditions carefully before ordering any Products from us. You should understand that by ordering any of our Products, you agree to be bound by those terms and conditions as well as these Conditions.

## 5. RISK AND TITLE

5.1 The Products will be at your risk from the time of delivery.

5.2 Ownership of the Products will only pass to you when we receive full payment (in cash or cleared funds) of all sums due in respect of the Products, including any delivery charges.

5.3 Until title to the Products has passed to you, you shall:

- (a) Not remove, deface, or obscure any identifying mark on or relating to the Products.
- (b) Not install the Products.
- (c) Maintain the Products in satisfactory condition and keep them insured against all risks for their full price from the date of delivery.

5.4 At any time before title to the Products passes to you, we may require you to deliver up all Products in your possession and if you fail to do so promptly, we may enter any of your premises and/or those of any third party where the Products are stored in order to recover them.

## 6. PRICE AND PAYMENT

6.1 The price of any Products will be as quoted on our site from time to time, except in cases of obvious error.

6.2 These prices (unless stated otherwise) include VAT and delivery costs (apart from goods/services sold out of the UK).

6.3 Prices are liable to change at any time, but subject to clause 6.6 changes will not affect orders in respect of which we have already sent you a Dispatch Confirmation.

6.4 It is always possible that, despite our best efforts, some of our Products may be incorrectly priced. We will normally verify prices as part of our dispatch procedures so that, where the Products' correct price is less than our stated price, we will charge the lower amount when dispatching the Products to you. If the Products' correct price is higher than the price stated, we will normally, at our discretion, either contact you for instructions before dispatching the Products, and/or reject your order and notify you of such rejection.



6.5 We are under no obligation to provide the Products to you at the incorrect (lower) price, even after we have sent you a Dispatch Confirmation if the pricing error is obvious and unmistakable and could have reasonably been recognised by you as a mis-pricing.

6.6 We may, by giving notice to you at any time up to 5 days before delivery, increase the price of the Products to reflect any increase in the cost of the Products that is due to:

- (a) Any request by you to change the Delivery Date, quantities, or types of Products ordered.
- (b) Any delay caused by any of your instructions or your failure to give us adequate or accurate information or instructions.

6.7 Unless agreed otherwise in writing, we may invoice you for the Products on or at any time after you place your order.

6.8 You shall pay for the Products:

- (a) When you place your order or in accordance with any credit terms agreed in writing.
- (b) In full and in cleared funds to a bank account that we nominate in writing.

6.9 Time for payment shall be of the essence of the Contract.

6.10 If you fail to make a payment due to us under the Contract by the due date, then, without limiting our remedies under clause 9 (Termination), you shall pay interest on the overdue sum from the due date until payment of the overdue sum, whether before or after judgment. Interest under this clause 6.10 will accrue each day at 4% a year above the Bank of England's base rate from time to time, but at 4% a year for any period when that base rate is below 0%.

6.11 All amounts due under the Contract shall be paid in full without any set-off, counterclaim, deduction or withholding other than any deduction or withholding of tax as required by law.

6.12 We accept payment by credit and debit card, and Paypal. We also accept payment by BACS, CHAPS or FPI etc.

6.13 We have the right to revise or revoke any credit terms in the event that you breach the Contract.

## 7. CASHBACK SCHEME

7.1 We offer a cashback scheme to you as detailed here which starts on 1st May 2023 unless it is changed, replaced, or withdrawn by us earlier.

7.2 You will automatically qualify for 1% cashback on any purchase made through our website where you have an account with us. This applies for online purchases only and applies to the total amount spent on the website (including VAT and delivery). You will receive a credit note to reflect VAT calculations for your own records.

7.3 Your cashback amount will be calculated automatically on our website once you have made a purchase and any available amounts will be shown on your account.

7.4 Your cashback amount can be claimed in the following ways by selecting the appropriate option via your account:

- (a) Set off against the amount of a future online purchase via our website.
- (b) Redeemed by request for a cash transfer direct to a bank account of your choice.
- (c) Redeemed as an Amazon voucher in set amounts.

7.5 You can redeem your cashback amount straight away or allow it to accumulate and redeem at a later stage in any of the three ways set out in 7.4 above.

## 8. WARRANTY / OUR LIABILITY




8.1 We warrant to you that at the time of delivery any Products purchased from us through our site will be of satisfactory quality and reasonably fit for any purpose held out by us.

8.2 We warrant that at the time of delivery the Products will be compliant with all applicable laws, but any requirement to re-test the Products following delivery will be your responsibility.

8.3 We guarantee that on delivery and for a period of twelve months (the "Guarantee Period"), the Products shall be free from material defects. Proof of purchase will be required. However, this guarantee does not apply in the circumstances described in clause 8.6.

8.4 Subject to clause 8.6, we shall, at our option, repair or replace the defective Products, or refund the price of the defective Products in full if:

(a) You give us notice in writing during the Guarantee Period within a reasonable time of discovery that some or all the Products do not comply with the guarantee set out in clause 8.3.

(b) We are given a reasonable opportunity of examining such Products.

8.5 These Conditions shall apply to any repaired or replacement Products that we supply.

8.6 The guarantee set out in clause 8.3 does not apply to any defect in the Products arising from:

(a) You continuing to use the Products after giving notice in accordance with clause 8.4.

(b) Fair wear and tear.

(c) Wilful damage, abnormal storage or working conditions, accident, negligence by you or by any third party.

(d) If you fail to operate or use the Products in accordance with the user instructions.

(e) Any alteration or repair by you or by a third party.

(f) Any specification provided by you.

8.7 In addition to clause 8.3 we also provide an extended warranty period against faulty materials or workmanship from the date of purchase for the following products below:

**EasyTANK:**

- 10- & 12-year guarantee on plastic bunded oil tanks
- 3-year guarantee on plastic single skin oil tanks
- 10-year guarantee on steel bunded oil tanks
- 3-year guarantee on steel single skin oil tanks
- 10-year guarantee on fire-resistant steel oil tanks
- 10-year guarantee on fire resistant plastic oil tanks

**PuraTANK:**

- 10-year guarantee on underground water tanks
- 10-year guarantee on above ground water tanks
- 10-year guarantee on underground cesspools
- 10-year guarantee on underground grease traps
- 10-year guarantee on underground septic tanks

**PortaFUEL:**

- 5-year guarantee on steel portable diesel tanks
- 2-year guarantee on plastic portable diesel tanks

 Atlantis

 PortaFUEL

- 2-year guarantee on portable tanks for AdBlue®

**StoraFUEL:**

- 10-year guarantee on generator feed steel bunded tanks
- 10- & 12-year guarantee on plastic static diesel tanks
- 10-year guarantee on steel static diesel tanks
- 10- & 12-year guarantee on static tanks for AdBlue®
- 12-year guarantee on plastic waste oil tanks
- 10-year guarantee on steel waste oil tanks
- 10-year guarantee on steel lube oil tanks

The guarantee excludes ancillary fittings such as liquid measuring gauges or mechanical pumps.

8.8 This guarantee does not confer any rights other than those expressly set out below and does not cover any claims for consequential loss or damage:

- The tank has not been misused or handled carelessly.
- The tank is used for the storage of Kerosene (C1/C2), Agricultural Fuel Oil (A2 and Diesel (D), (BS2869: Part 2:1998) or in the case of water and waste tanks - water or the specified waste. It should be noted that our tanks are not suitable for the storage of petrol or liquid petroleum gas (LPG).
- The tank is installed in accordance with the installation instructions.
- The tank has been installed by an OFTEC approved installer and / or complied with the current Building Control Regulations at time of installation.
- The tank has not transferred ownership.
- Steel tanks must be painted following installation to cover any bare metal areas caused during transit & installation. Steel tanks must also be painted once a year to maintain the 3- or 10-year warranty. (If painted once a year we can advise that the tanks will last longer than the warranty period advised). The tank paint is a Zinsser paint which can be purchased on our website.

8.9 The guarantee is offered as an extra benefit and does not affect your statutory rights as a customer.

8.10 The terms implied by sections 13 to 15 of the Sale of Goods Act 1979 are, to the fullest extent permitted by law, excluded from the Contract.

8.11 We have obtained insurance cover in respect of its own legal liability for certain claims, but we have been unable to obtain insurance in respect of certain types of loss at a commercially viable price. The limits and exclusions in this clause 8 reflect the insurance cover that we have been able to arrange, and you are responsible for making your own arrangements for the insurance of any excess loss.

8.12 The restrictions on liability in this clause 8 apply to every liability arising under or in connection with the Contract including for negligence.

8.13 Our liability for losses you suffer as a result of us breaching the Contract is limited to the purchase price of the Products you purchased. We are not responsible for indirect or consequential losses including but not limited to:

- Loss of the content of any tank.
- Damage to tangible property.
- Loss of income or revenue.
- Loss of profits.
- Loss of sales or business.
- Loss of agreements or contracts.




(g) Loss of anticipated savings.

(h) Loss of use or corruption of software, data or information.

(i) Loss of or damage to goodwill.

(j) Reinstallation and removal costs.

(k) Remedial costs.

8.14 This does not exclude or limit in any way our liability:

(a) For death or personal injury caused by our negligence or the negligence of our employees, agents, or subcontractors.

(b) For fraud or fraudulent misrepresentation.

(c) For any matter for which it would be unlawful for us to exclude, or attempt to exclude, our liability.

8.15 This clause 8 shall survive termination of the Contract.

## 9. TERMINATION

9.1 Without limiting our other rights or remedies, we may suspend provision of the Products under the Contract if you fail to pay any amount due under the Contract on the due date for payment.

9.2 Without limiting our other rights or remedies, we may terminate the Contract with immediate effect by giving written notice to you if you fail to pay any amount due under the Contract on the due date for payment.

9.3 On termination of the Contract for any reason you shall immediately pay all of our outstanding unpaid invoices and interest and, in respect of Products supplied but for which no invoice has been submitted, we shall submit an invoice, which shall be payable by you immediately on receipt.

9.4 Termination or expiry of the Contract, however arising, shall not affect any of the parties' rights and remedies that have accrued as at termination or expiry, including the right to claim damages in respect of any breach of the Contract which existed at or before the date of termination or expiry.

9.5 Any provision of the Contract that expressly or by implication is intended to come into or continue in force on or after termination or expiry of the Contract shall remain in full force and effect.

## 10. WRITTEN COMMUNICATIONS

Applicable laws require that some of the information or communications we send to you should be in writing. When using our site, you accept that communication with us will be mainly electronic. We will contact you by e-mail or provide you with information by posting notices on our website. For contractual purposes, you agree to this electronic means of communication and you acknowledge that all contracts, notices, information, and other communications that we provide to you electronically comply with any legal requirement that such communications be in writing. This condition does not affect your statutory rights.

## 11. NOTICES

All notices given by you to us must be given to us at [sales@atlantistanks.co.uk](mailto:sales@atlantistanks.co.uk). We may give notice to you at either the e-mail or postal address you provide to us when placing an order, or in any of the ways specified above. Notice will be deemed received and properly served immediately when posted on our website, 24 hours after an e-mail is sent, or three days after the date of posting of any letter. In proving the service of any notice, it will be sufficient to prove, in the case of a letter, that such letter was properly addressed, stamped, and placed in the post and, in the case of an e-mail, that such e-mail was sent to the specified e-mail address of the addressee.

## 12. TRANSFER OF RIGHTS AND OBLIGATIONS



12.1 The Contract between you and us is binding on you and us and on our respective successors and assigns.

12.2 You may not transfer, assign, charge or otherwise dispose of the Contract, or any of your rights or obligations arising under it, without our prior written consent.

12.3 We may transfer, assign, charge, sub-contract or otherwise dispose of the Contract, or any of our rights or obligations arising under it, at any time during the term of the Contract.

#### 13. EVENTS OUTSIDE OUR CONTROL

13.1 We will not be liable or responsible for any failure to perform, or delay in performance of, any of our obligations under a Contract that is caused by events outside our reasonable control ("Force Majeure Event").

13.2 A Force Majeure Event includes any act, event, non-happening, omission, or accident beyond our reasonable control and includes in particular (without limitation) the following:

- (a) Strikes, lock-outs or other industrial action.
- (b) Civil commotion, riot, invasion, terrorist attack or threat of terrorist attack, war (whether declared or not) or threat or preparation for war.
- (c) Fire, explosion, storm, flood, earthquake, subsidence, epidemic, pandemic, or other natural disaster.
- (d) Impossibility of the use of railways, shipping, aircraft, motor transport or other means of public or private transport.
- (e) Impossibility of the use of public or private telecommunications networks.
- (f) The acts, decrees, legislation, regulations, or restrictions of any government.

13.3 Our performance under any Contract is deemed to be suspended for the period that the Force Majeure Event continues, and we will have an extension of time for performance for the duration of that period. We will use our reasonable endeavours to bring the Force Majeure Event to a close or to find a solution by which our obligations under the Contract may be performed despite the Force Majeure Event.

13.4 We may have to cancel your order if stock is unavailable. If this happens:

- (a) We will promptly contact you to let you know.
- (b) If you have made any payment in advance for Products that have not been delivered to you, we will refund those amounts to you.
- (c) We will not charge you anything further and you will not have to make any payment to us.

#### 14. WAIVER

14.1 If we fail, at any time during the term of the Contract, to insist upon strict performance of any of your obligations under the Contract or any of these Conditions, or if we fail to exercise any of the rights or remedies to which we are entitled under the Contract, this shall not constitute a waiver of such rights or remedies and shall not relieve you from compliance with such obligations.

14.2 A waiver by us of any default shall not constitute a waiver of any subsequent default.

14.3 No waiver by us of any of these Conditions shall be effective unless it is expressly stated to be a waiver and is communicated to you in writing in accordance with clause 11 above.

#### 15. SEVERABILITY

If any of these Conditions or any provisions of a Contract are determined by any competent authority to be invalid, unlawful, or unenforceable to any extent, such term, condition, or provision will to that extent be severed from the remaining terms, conditions and



provisions which will continue to be valid to the fullest extent permitted by law.

#### 16. ENTIRE AGREEMENT

16.1 These Conditions and any document expressly referred to in them represent the entire agreement between us in relation to the subject matter of any Contract and supersede any prior agreement, understanding or arrangement between us, whether oral or in writing. These Conditions apply to the Contract to the exclusion of any other terms which are implied by law, trade custom, practice, or course of dealing.

16.2 We each acknowledge that, in entering into a Contract, neither of us has relied on any representation, undertaking or promise given by the other or be implied from anything said or written in negotiations between us prior to such Contract except as expressly stated in these Conditions.

16.3 Any samples, drawings, descriptive matter or advertising produced by us, and any descriptions or illustrations contained in our catalogues or brochures are produced for the sole purpose of giving an approximate idea of the Products referred to in them. They shall not form part of the Contract nor have any contractual force.

16.4 Each of us agrees that the only rights and remedies available to us arising out of or in connection with a representation shall be for breach of contract as provided in these Conditions.

16.5 Nothing in this clause shall limit or exclude any liability for fraud.

#### 17. OUR RIGHT TO VARY THESE CONDITIONS

17.1 We have the right to revise and amend these Conditions from time to time.

17.2 You will be subject to the policies and Conditions in force at the time that you order products from us, unless any change to those policies or these Conditions is required to be made by law or governmental authority (in which case it will apply to orders previously placed by you), or if we notify you of the change to those policies or these Conditions before we send you the Dispatch Confirmation (in which case we have the right to assume that you have accepted the change to the Conditions, unless you notify us to the contrary within three working days of receipt by you of the Products).

#### 18. LAW AND JURISDICTION

Contracts for the purchase of Products through our site and any dispute or claim arising out of or in connection with them or their subject matter or formation (including non-contractual disputes or claims) will be governed by English law. Any dispute or claim arising out of or in connection with such Contracts or their formation (including non-contractual disputes or claims) shall be subject to the non-exclusive jurisdiction of the courts of England and Wales.

#### 19. GENERAL DATA PROTECTION REGULATION

The General Data Protection Regulation ('GDPR') came into force on 1 May 2018 and sets out how we must process data that we hold about you. We refer you to the GDPR Fair Processing Notice on our site for further details.

#### 20. INFORMATION ABOUT US

Portafuel, StoraFuel, Puratank and Easytank are trading names of Atlantis Tanks Group Ltd (company number: 09955291) whose registered address is Legend House, Station Road, Ferryhill, England, DL17 0BP. Details of this company can be found at [www.atlantistanks.co.uk](http://www.atlantistanks.co.uk).

#### 21. PRIVACY POLICY

We use Stripe for payment, analytics, and other business services. Stripe collects identifying information about the devices that connect to its services. Stripe uses this information to operate and improve the services it provides to us, including for fraud detection. You can learn more about Stripe and read its privacy policy at <https://stripe.com/privacy>.

AdBlue® is a registered trade mark of the German Association of the Automotive Industry and Atlantis Tanks Group are not associated with AdBlue® or the German Association of the Automotive Industry.









**Here for you**

Tel: 0330 999 1100

Fax: 0844 844 0405

Email: [sales@atlantistanks.co.uk](mailto:sales@atlantistanks.co.uk)

[www.atlantistanks.co.uk](http://www.atlantistanks.co.uk)

Legend House

Station Road

Ferryhill

DL17 0BP